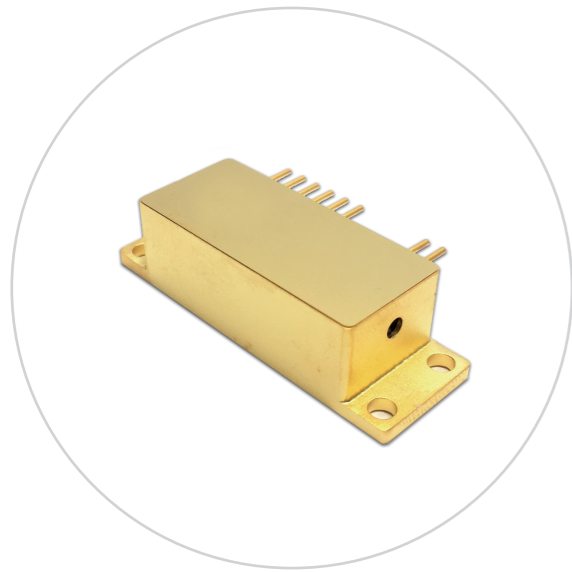


1064nm Microchip Laser Module



Key Features

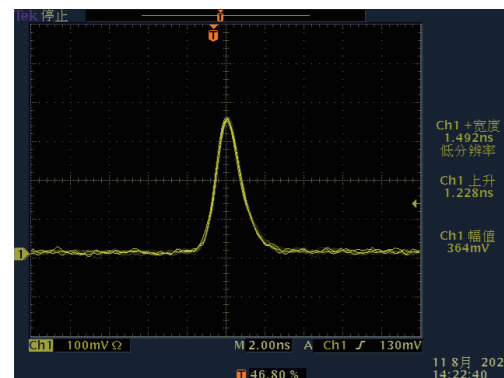
- ◆ Built-in TEC
- ◆ Sealed package, high reliability
- ◆ Compact design, weighs less than 50g
- ◆ Other repetition rates available upon request

Applications

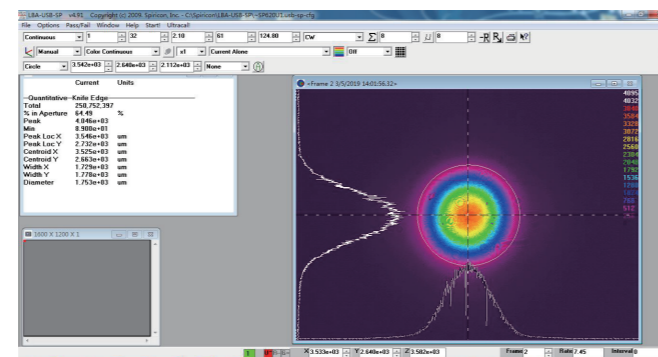
- Marking, Slotting, Drilling of FPC or PCB
- Scribing & Marking of Gemstone
- Ceramic Processing
- Marking of Glass or Resin
- Scribing & Marking of other Hard Materials

Technical Specifications

Wavelength (nm)	1064	
Repetition rate (kHz)	10	15
Average power (mW)	200	450
Pulse energy (μJ)	20	30
Pulse width (ns)	1.5	1.5
Power stability (4h)	±3%	
Beam profile	TEM ₀₀	
Full angle divergence Typ. (mrad)	10	
Pump LD	operating voltage: 2V; max current: < 10A	
TEC	max. current: 7A; max. voltage: 8V	



Typical Pluse

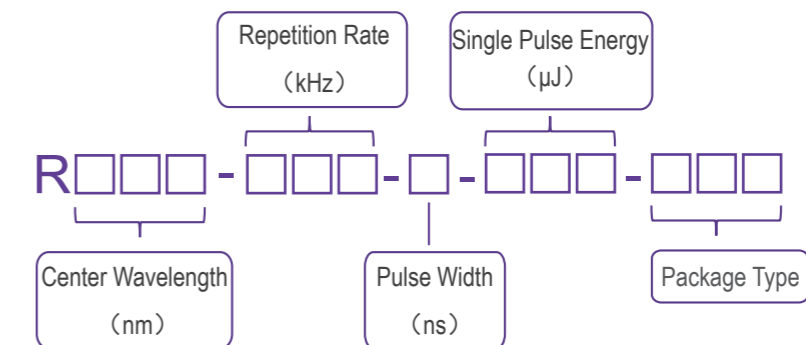


Beam Profile

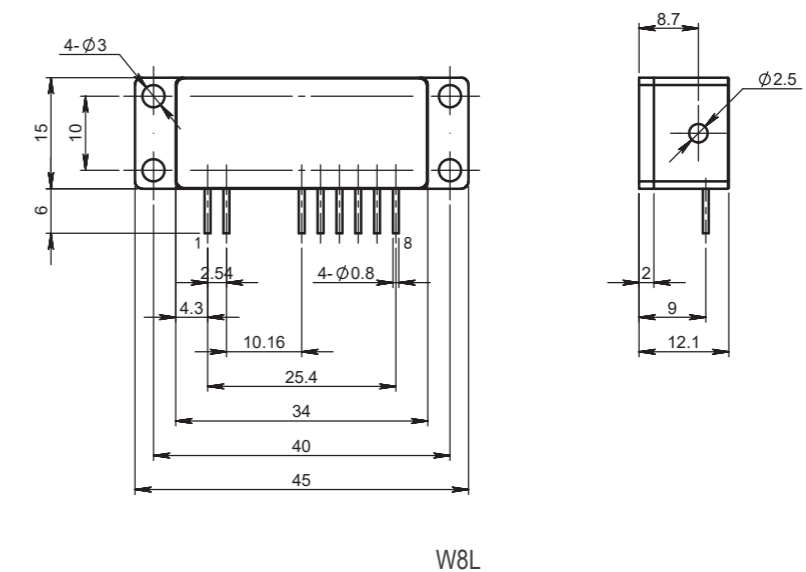
Order Information

Wavelength (nm)	Part Number	Repetition rate (kHz)	Pulse width (ns)	Pulse energy (μJ)
1064	R1064-10kHz-1.5ns-20uJ-W8L	10	1.5	20
	R1064-15kHz-1.5ns-30uJ-W8L	15	1.5	30

Part Numbering Schema



Mechanical Drawings (in mm)



W8L Pin Descriptions

PIN	Function	PIN	Function
1	-	5	Thermistor
2	-	6	TEC (+)
3	TEC (-)	7	LD (+)
4	Thermistor	8	LD (-)

