



HiSpeed

LASER SYSTEM

乐速激光

HISPEED LASER

乐速激光

A Leading Professional Manufacturer of Laser Marking Machine

激光设备专业生产厂家

About HiSpeed Laser

关于乐速

Who Are We?

Dongguan HiSpeed Laser Technology is a factory providing laser marking machine and laser technology support to customers in laser industry worldwide.

What We Do?

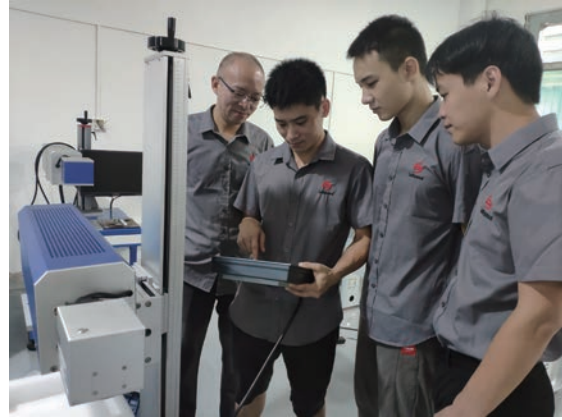
Manufacturing and Selling Fiber laser marking machine, CO2 laser marking machine, UV laser marking machine and more.

How we can help you?

To save cost on sourcing laser machines and spare parts
To get the most suitable laser marking machine for your products
To recommend you the best laser marking solution for your production line reliably and cost-effectively

Why we can help you?

The company founder has more than ten years experience in laser machine industry
The engineers team is professional and work efficiently
The sales team is customer oriented and with easy communication abilities
Our machines have been exported to more than 50 countries and enjoy good reputation



东莞市乐速光电科技有限公司是一家专业提供工业激光设备和激光技术整体解决方案的高科技企业，为国内外客户提供一整套激光加工解决方案及相关配套设施，主要产品包括：光纤激光打标机系列、二氧化碳激光打标机系列、紫外激光打标机系列、激光切割机系列等多个系列的工业激光设备及其配套产品。

NEW MODEL MINI SMART FIBER LASER MARKER

新款迷你小型光纤激光打标机



Features & Advantage 产品特点&优势

- Attractive design, mini Size
整机设计紧凑，小巧精致
- Motorized Z axis, double red light pointers for Positioning
电动升降，双红光定位
- No consumables, free Maintenance
无耗材、免维护
- Long lifetime upto 100,000hours
使用寿命长达10万个小时
- High marking speed, high efficiency, high precision
打标速度快，超高精细度

Applications & Materials 适用行业&材料

- Jewelry Marking Engraving 金银首饰打标
- Metal Parts Knife Tools Marking 五金刀具打标
- Sanitary Ware Marking 卫浴洁具打标
- Glass Watch Clock Marking 眼镜钟表打标
- Luggage Buckles Marking 箱包饰扣打标

Technical Parameters 技术参数

Laser Type 激光类型	PULSE / MOPA
Laser Power 激光功率	20W/30W
Wavelength 激光波长	1064nm
Beam Quality 光束质量	M2<1.5
Marking Range 打标范围	≤175x175mm
Max.Line Speed 最大线速	7000mm/s
Min.Line Width 最小线宽	0.01mm
Min.Character 最小字符	0.1mm
Repeatability 重复精度	±0.01mm
Cooling Mode 冷却方式	Air Cooling
Power Requirement 电力需求	220V ± 10%/50Hz or 110V ± 10%/60Hz
Machine Size 外形尺寸	420x480x760mm

Sample Show 样品图片



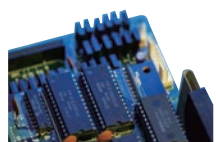
FIBER LASER MARKING MACHINE

光纤激光打标机

LS-YLP Series



Sample Show 样品图片



Features & Advantage 产品特点&优势

- Marking on various metal and some plastic material 适用于金属材料及部分塑胶材料
- No consumables, free Maintenance 无耗材、免维护
- Stable performance, no faulty in long time working 性能稳定、可长时间运行
- Long lifetime upto 100,000hours 使用寿命长达10万个小时
- High marking speed, high efficiency, high precision 打标速度快，超高精细度
- Software with powerful edit function but easy operation 软件功能强大，操作简单
- Air cooling design, compact structure 风冷结构，整机设计紧凑



Applications & Materials 适用行业&材料

- Metal Parts Knife Tools Marking 五金刀具打标
- Sanitary Ware Marking 卫浴洁具打标
- Electronic Component Marking 电子元器件打标
- Glass Watch Clock Marking 眼镜钟表打标
- Luggage Buckles Marking 箱包饰扣打标
- Jewelry Engraving Cutting 金银首饰雕刻切割
- Medical Tools Device Marking 医疗器具打标
- Auto Parts Marking 汽车配件打标
- Cables Wires Marking 电线电缆打标

Technical Parameters 技术参数

Model 机器型号	LS-YLP-20L	LS-YLP-30L	LS-YLP-50L
Laser Type 激光类型	PULSE / MOPA		
Laser Power 激光功率	20W	30W	50W
Wavelength 激光波长	1064nm		
Beam Quality 光束质量	M2<1.5		
Marking Range 打标范围	50x50mm – 300x300mm(optional)		
Max.Line Speed 最大线速	7000mm/s		
Min.Line Width 最小线宽	0.01mm		
Min.Character 最小字符	0.1mm		
Repeatability 重复精度	± 0.01mm		
Cooling Mode 冷却方式	Air Cooling		
Power Requirement 电力需求	220V ± 10%/50Hz or 110V ± 10%/60Hz		
Machine Size 外形尺寸	800x600x1400mm		

UV LASER MARKING MACHINE

紫外激光打标机

LS-UV Series



Sample Show

样品图片



Features & Advantage 产品特点&优势

- Wide range of application 适用范围广
- No consumables, free Maintenance 无耗材、免维护
- Water cooling design, stable performance 水冷设计，性能稳定
- High marking speed, high efficiency, high precision 打标速度快，超高精细度
- Short wavelength, high single-photon energy 激光波长短，单光子能量大
- Software with powerful edit function but easy operation 软件功能强大，操作简单

Applications & Materials 适用行业&材料

- Metal and Non-metal Materials 金属和非金属材料
- Glass Marking 玻璃材料
- LCD Screen, Plasma Screen Marking 液晶屏、等离子屏打标
- Thin Ceramic Marking 薄片陶瓷打标
- Silicon Chips Marking 单晶硅片打标
- IC Grain Marking IC晶粒打标
- Polymer Film Marking 高分子膜打标
- Auto Parts Marking 汽车配件打标
- Other High Value-added Products Marking 光盘等较高附加值产品的打标

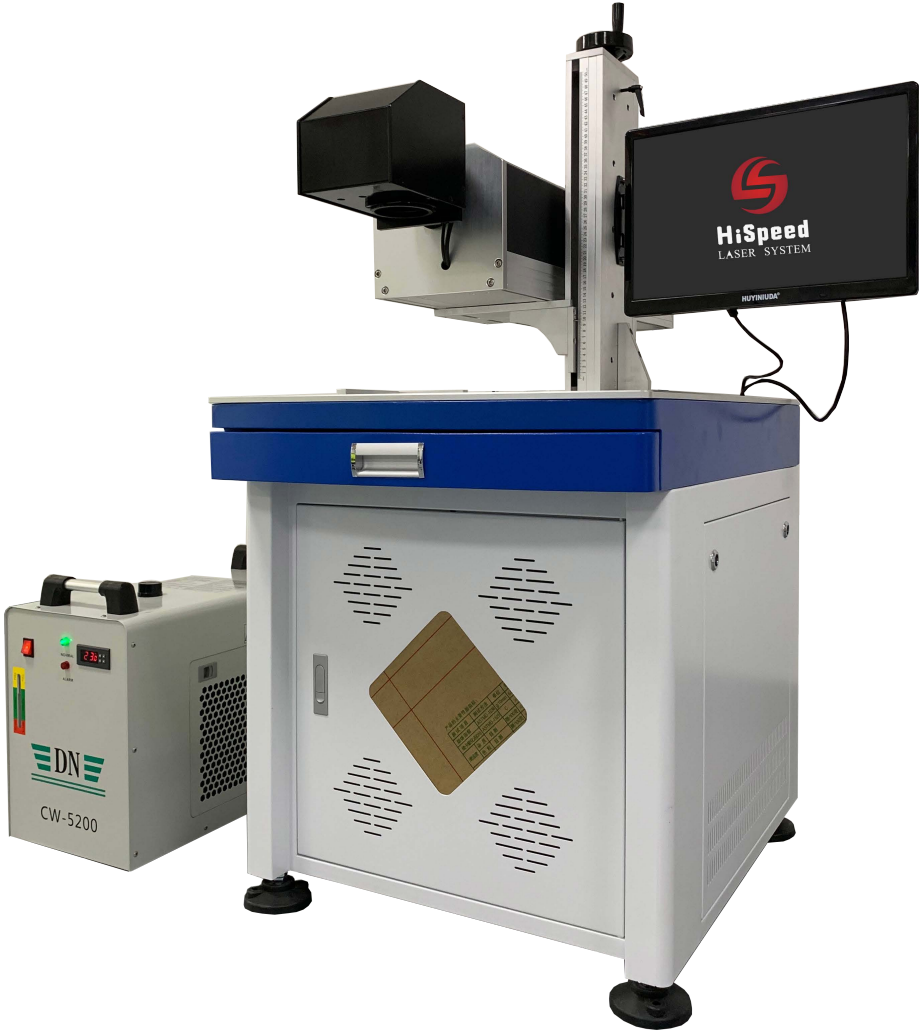
Technical Parameters 技术参数

Model	机器型号	LS-UV3	LS-UV5	LS-UV8
Laser Type	激光类型	PULSE SOLID-STATE LASER		
Laser Power	激光功率	3W	5W	8w
Wavelength	激光波长	355nm		
Beam Quality	光束质量	M2<1.2		
Marking Range	打标范围	50x50mm - 300x300mm(optional)		
Max.Line Speed	最大线速	7000mm/s		
Min.Line Width	最小线宽	0.01mm		
Min.Character	最小字符	0.1mm		
Repeatability	重复精度	± 0.01mm		
Cooling Mode	冷却方式	Water Cooling		
Power Requirement	电力需求	220V ± 10%/50Hz or 110V ± 10%/60Hz		

CO2 LASER MARKING MACHINE

二氧化碳激光打标机

LS-CO2 Series



Sample Show 样品图片



Features & Advantage 产品特点&优势

- Marking a variety of non-metal materials 适用于多种非金属材料
- No consumables, free Maintenance 耗材、免维护
- Stable performance, no faulty in long time working 性能稳定、可长时间运行
- Long lifetime upto 60,000hours 使用寿命长达6万个小时
- High marking speed, high efficiency, high precision 打标速度快，超高精细度
- Software with powerful edit function but easy operation 软件功能强大，操作简单
- Air cooling design, compact structure 风冷结构，整机设计紧凑

Applications & Materials 适用行业&材料

- PU Leather Marking 皮革材料打标
- Wood Bamboo Marking 竹木材料打标
- Paper Card Engraving Cutting 纸卡贺卡雕刻
- Acrylic Marking 有机玻璃亚克力打标
- Plastic Rubber Marking 塑料橡胶材料打标
- Ceramic Resin Marking 陶瓷树脂打标
- Craft Gifts Marking 工艺礼品打标
- Micro-hole Processing 微孔打标加工
- Silicon Wafer Marking Processing 硅晶原片打标加工

Technical Parameters 技术参数

Model 机器型号	LS-CO-20D	LS-CO-30D	LS-CO-50D
Laser Power 激光功率	20W	30W	50W
Wavelength 激光波长	9.3um / 10.64um		
Beam Quality 光束质量	M2<1.5		
Marking Range 打标范围	50x50mm - 300x300mm(optional)		
Max.Line Speed 最大线速	5000mm/s		
Min.Line Width 最小线宽	0.02mm		
Min.Character 最小字符	0.1mm		
Repeatability 重复精度	± 0.01mm		
Cooling Mode 冷却方式	Air Cooling		
Power Requirement 电力需求	220V ± 10%/50Hz or 110V ± 10%/60Hz		

CO2 LASER MARKING MACHINE

二氧化碳激光打标机

LS-CO2-S Series



Large Scan Field 3 Axis Dynamic RF Metal Tube CO2 Laser Marking Machine

大面积三维动态二氧化碳激光打标机



Large Scan Field 3 Axis Dynamic Glass Tube CO2 Laser Marking Machine

二氧化碳玻璃管激光打标机

Sample Show 样品图片



Features & Advantage 产品特点&优势

- Marking a variety of non-metal materials 适用于多种非金属材料
- No consumables, free maintenance(metal tube) 无耗材、免维护(金属管)
- Stable performance, no faulty in long time working 性能稳定、可长时间运行
- Long lifetime upto 60,000hours 使用寿命长达5万个小时
- High marking speed, high efficiency, high precision 打标速度快，超高精细度
- Software with powerful edit function but easy operation 软件功能强大，操作简单
- Air cooling design, compact structure 风冷结构，整机设计紧凑

Applicable Industry 适用行业

Textiles, footwear, apparel, art&crafts, bamboo and wooden products, advertisement decoration, packing, furniture, architectural model and so on.

鞋材、服装、工艺品、竹木制品、广告装潢、包装、家具、建筑模型等行业

Applications&Materials 材料

Leather, rubber, wood, bamboo, organic glass, ceramic tile, plastics, jade, fabric and other non-metals
皮革、橡胶、木板、竹制品、有机玻璃、瓷砖等

Technical Parameters 技术参数

Model 机器型号		RF Metal Tube CO2 Laser Marking Machine	Glass Tube CO2 Laser Marking Machine
Laser Type 激光类型		Metal Tube	Glass Tube
Laser Power 激光功率		100W/150W/200W/250W	80W/100/130W/150W
Wavelength 激光波长		10.64um	
Marking Range 打标范围		400x400mm/600x600mm/800x800mm	
Max.Line Speed 最大线速		5000mm/s	
Min.Character 最小字符		1mm	
Repeatability 重复精度		± 0.02mm	
Cooling Mode 冷却方式		Water Cooling	
Power Requirement 电力需求		220V ± 10%/50Hz or 110V ± 10%/60Hz	

CO2 LASER ENGRAVING CUTTING MACHINE

二氧化碳切割机



Main accessories 主要配件



Cool chiller



air fan



air compressor

Sample Show

样品图片



Product Feature 产品特点

CO2 laser engraving and cutting machine series adopts international advanced DSP control technology, they have the high speed, high cutting accuracy and high stability, the quality and price ratio is very high. The main system can be commanded by U-disk without PC connection. It has the functions of imitative cutting, color separating cutting, non-stop cutting once off power, etc.

DSP控制系统，操作灵活方便人性化；性能稳定；速度快、精度高，广泛应用于服装皮革、亚克力面板、工艺品及广告水晶字等各行业

Applicable Industry 适用行业

Engraving and cutting of paper, fabric, plastic, nonwoven cloth in garment and toy industries, also inclusive of precise cutting to non-metal materials, like acrylic and MDF board in handbag, glove, mold, advertisements, decoration, electrical appliance and plastic industries.

适用于服装绣花、皮革制品、竹木制品、电子电器、模型、工艺品、广告装潢、包装印刷、纸制品等行业

Applicable Material 适用材料

Woodwork, paper, leather, cloth, organic glass, resin, acrylic, woolens, plastic, rubber, ceramic, crystal, jade, bamboo and other non-metal materials.

适用于木制品、纸张、皮革、布料、有机玻璃、环氧树脂、亚克力、毛料、塑料、橡胶、瓷砖、水晶、玉石、竹制品等非金属材料

Technical Data 技术参数

Laser Type	CO2 Glass Tube Laser
Laser Power	40W/60W/80W/100W/130W/150W
Engraving Area	640/960/1080/1280/1390/1610/1810/ 1325/1625/1825
Engraving Speed	0-64m/m
Cutting Speed	0-36m/m
Repeat Accuracy	± 0.05mm
Moving System	CNC control system
Cooling Mode	Water-cooling and protection system
Overall Power Consumption	≤ 1250w
Working Voltage	220 ± 10% 50Hz(60Hz)
Operating Temperature	0-45 ° C
Operating Humidity	5%-95%
Controlling Software	Ruida Control Card
Ruida Control Card	CAD, MP,JPG,PNG,TIF,PCX,TAG,IOO,GIF,PLT

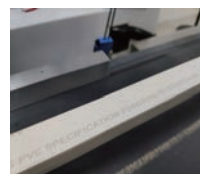
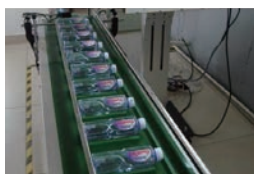
ONLINE FLY LASER MARKING MACHINE

在线飞行激光打标机

LS-YLP-F Series



Sample Show 样品图片



Features & Advantage 产品特点&优势

- Suspension split case, flexible design 分体式悬挂结构，方便可调整
- 10.4 Inches smart touch screen 10.4英寸触摸屏控制系统
- No consumables, free Maintenance 无耗材、免维护
- Stable performance, no faulty in long time working 性能稳定、可长时间运行
- High marking speed 高效打标，速度快



Applicable Industries 适用行业

Food Industry, Beverage Industry, Pharmacy Industry, Auto Parts Industry, Electronics Industry, Plastic Pipe Industry, Wire & Cable Industry

食品、饮料、医药包装行业，汽配行业、电子元器件配件行业、塑胶管行业、电线电缆行业

Technical Parameters 技术参数

Laser Type	激光类型	Fiber	CO2	UV
Wavelength	激光波长	1064nm	9.3/10.64um	355nm
Beam Quality	光束质量	M2<1.5	M2<1.5	M2<1.2
Marking Range	打标范围	100x100mm / 175x175mm		
Max.Line Speed	最大线速	12000mm/s		
Min.Line Width	最小线宽	0.01mm		
Min.Character	最小字符	0.1mm		
Repeatability	重复精度	± 0.01mm		
Cooling Mode	冷却方式	Air Cooling / Water Cooling		
Power Requirement	电力需求	220V ± 10%/50Hz or 110V ± 10%/60Hz		
Machine Size	外形尺寸	450x450x1300mm		

MINI FIBER LASER MARKING MACHINE

小型光纤激光打标机

LS-YLP-P Series



Portable Fiber Laser Marker 便携式激光打标机

Technical Parameters 技术参数

Laser Type	激光类型	PULSE / MOPA
Laser Power	激光功率	20W/30W/50W
Marking Range	打标范围	≤ 110x110mm
Machine Size	外形尺寸	210x650x500mm

Hand-held Fiber Laser Marker 手持式激光打标机

Technical Parameters 技术参数

Laser Type	激光类型	PULSE / MOPA
Laser Power	激光功率	20W/30W/50W
Marking Range	打标范围	≤ 140x140mm
Machine Size	外形尺寸	215x615x500mm



Sample Show 样品图片





Split Type Fiber Laser Marker 分体式激光打标机

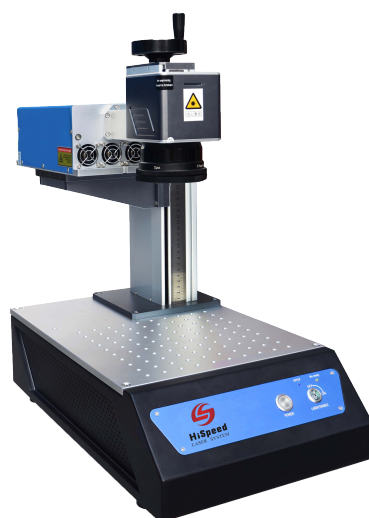
Technical Parameters 技术参数

Laser Type	激光类型	PULSE / MOPA
Laser Power	激光功率	20W/30W/50W
Marking Range	打标范围	≤ 300x330mm
Machine Size	外形尺寸	320x550x500mm 210x450x400mm

Mini UV Laser Marker 迷你激光打标机

Technical Parameters 技术参数

Laser Type	激光类型	PULSE SOLID-STATE LASER
Laser Power	激光功率	1.5W
Marking Range	打标范围	≤ 175x175mm
Machine Size	外形尺寸	340x549x668mm



Sample Show 样品图片



Laser Spare Parts

配件



Laser Source
激光器



Control Board
控制卡



Galvo Scanner
振镜



F-theta Lens
场镜



Power Sply
电源



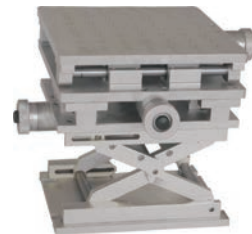
Red Light Indicator
红光指示器



Laser Glass Tube
玻璃激光管



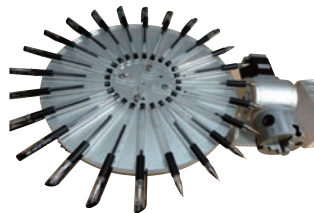
Fume Extractor
烟雾过滤器



XYZ Work Table
三维工作台



Rotary Fixture
旋转夹具



Rotary Table For Pen Marking
钢笔打标旋转工作台



XY Axis Moving Work Plate
XY轴移动平台



HiSpeed

LASER SYSTEM

乐速激光

Dongguan Hispeed Laser Technology Ltd.
东莞市乐速光电科技有限公司

Add: 东莞市寮步镇横坑横西六路26号一层
No.26th,HengxiLiulu,Hengkeng,Liaobu,
Dongguan,Guangdong,China 523413

Web: www.hispeedlaser.com

E-mail: info@hispeedlaser.com

Whatsapp/Wechat/Skype:

+86 15377700221 +86 15377700773

