

1. After the installation of the CNC machine driver we turn on the controller box of the machine.

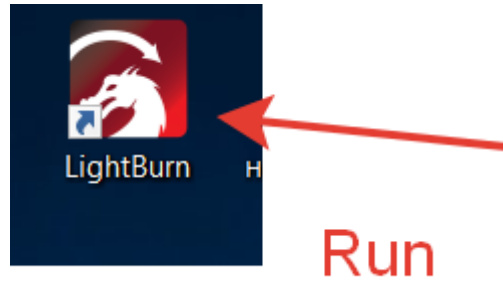


2. We connect a USB port of the machine to a USB port of the computer with the Lightburn

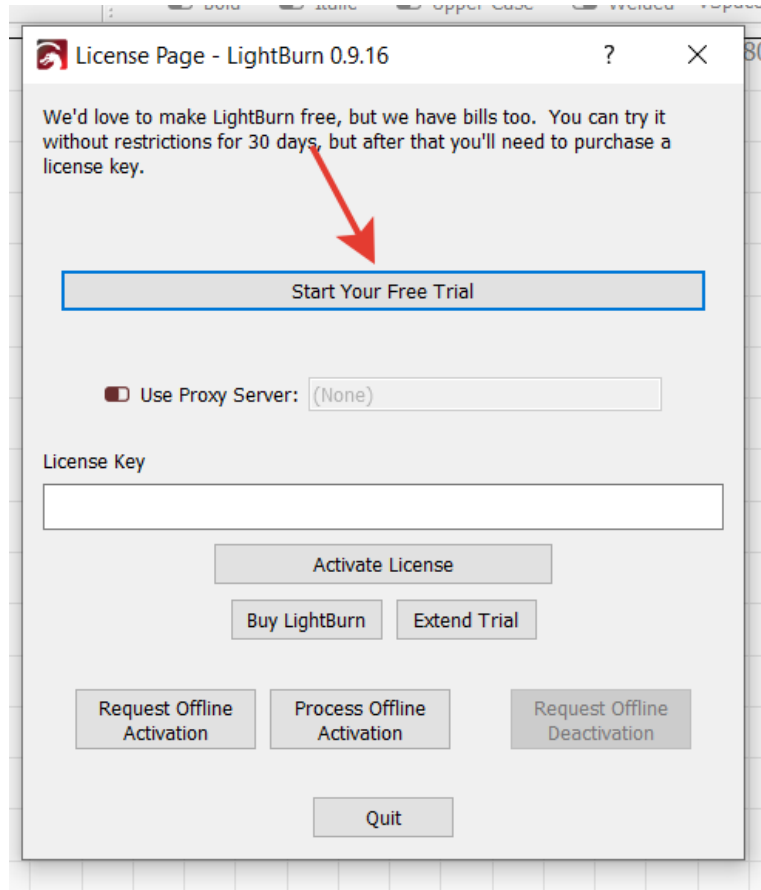


program and CNC machine drivers.

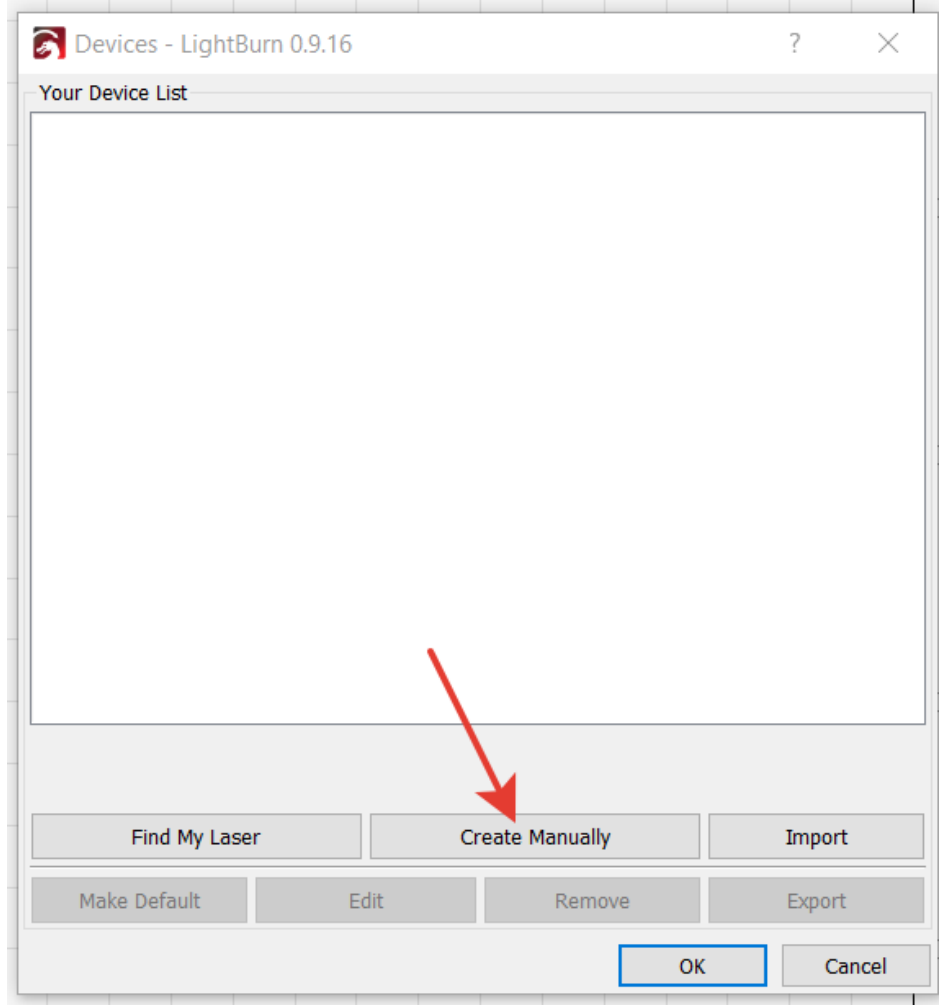
3. Run the Lightburn program by clicking the icon on the desktop.



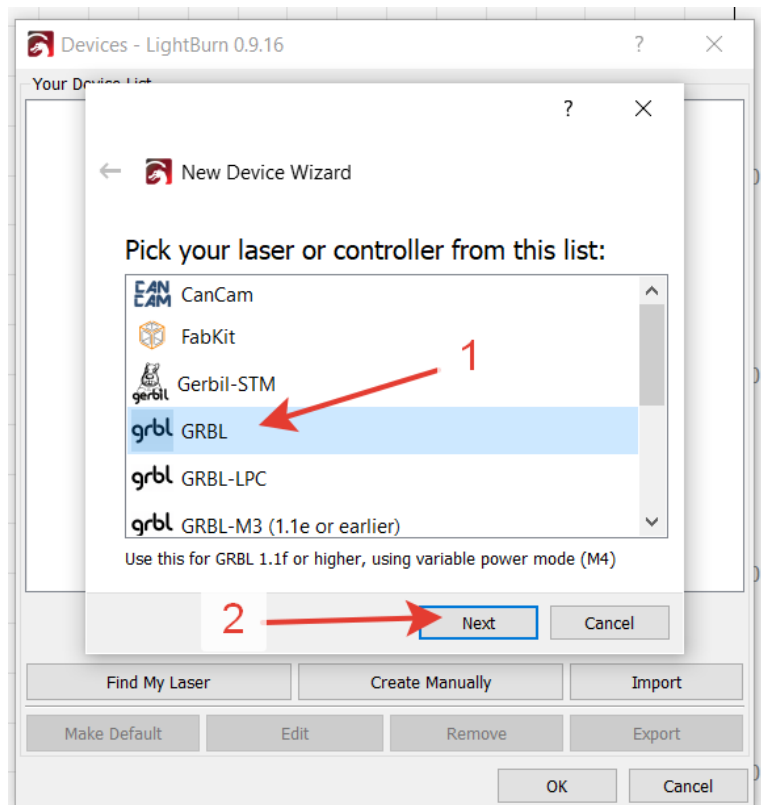
4. Then we start our free trial or activate the license with the key if we have one.

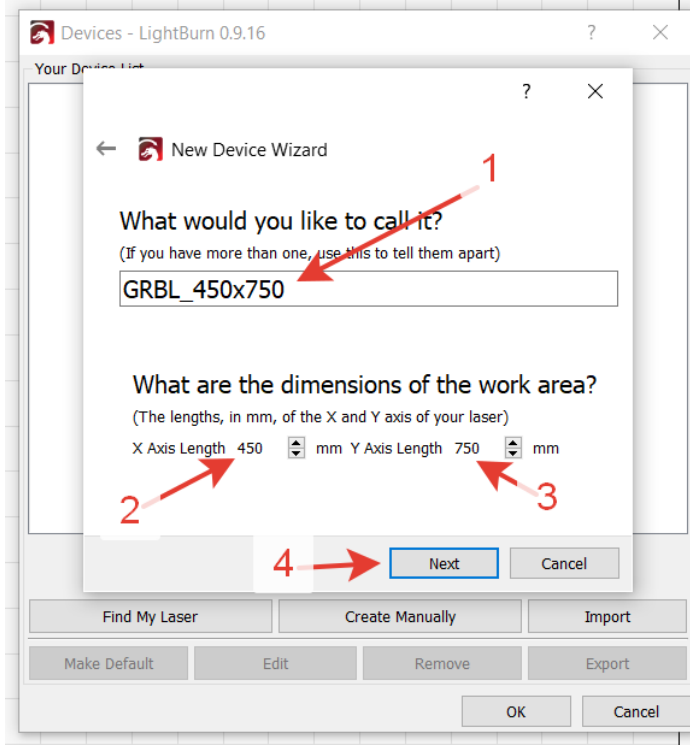
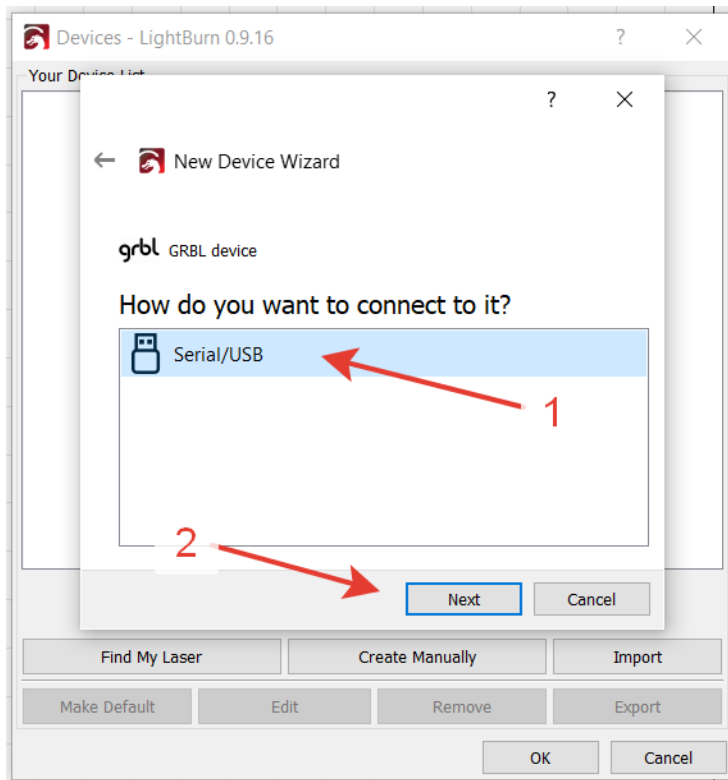


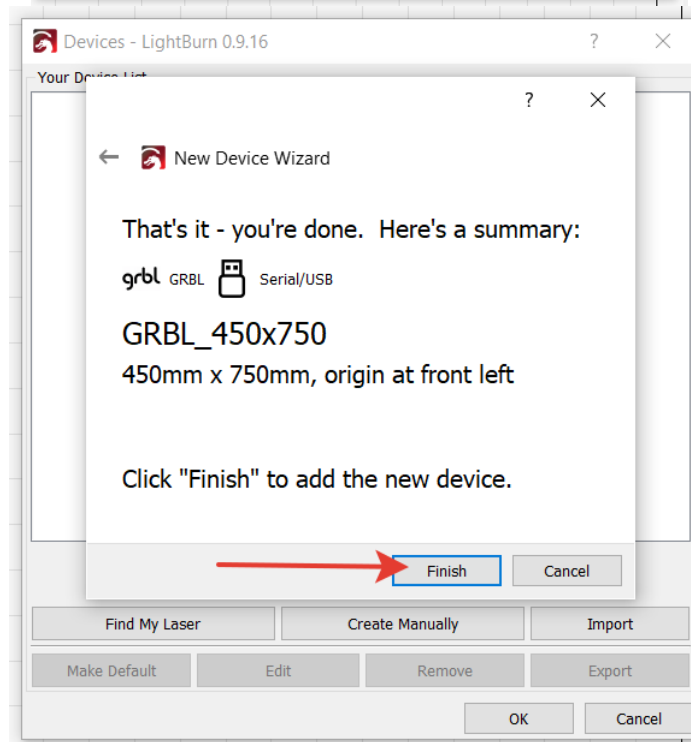
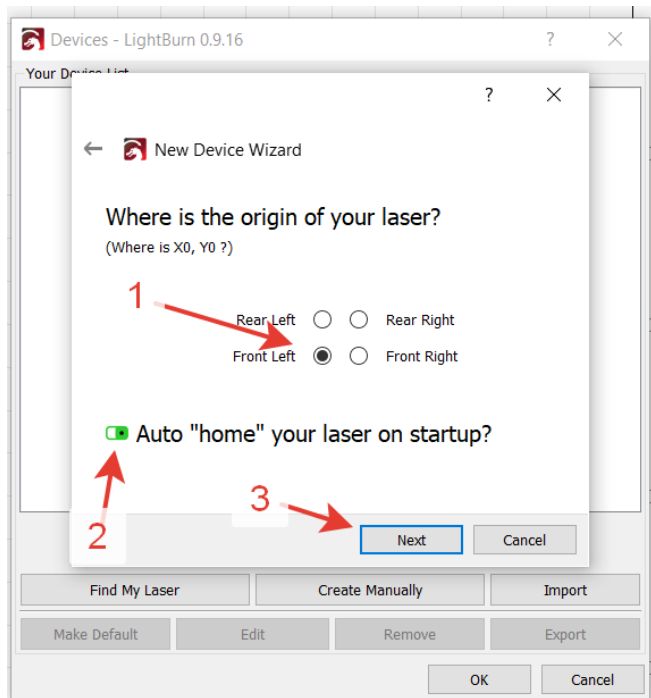
5. A window will open to pick up a new laser device. We do everything what is shown on the

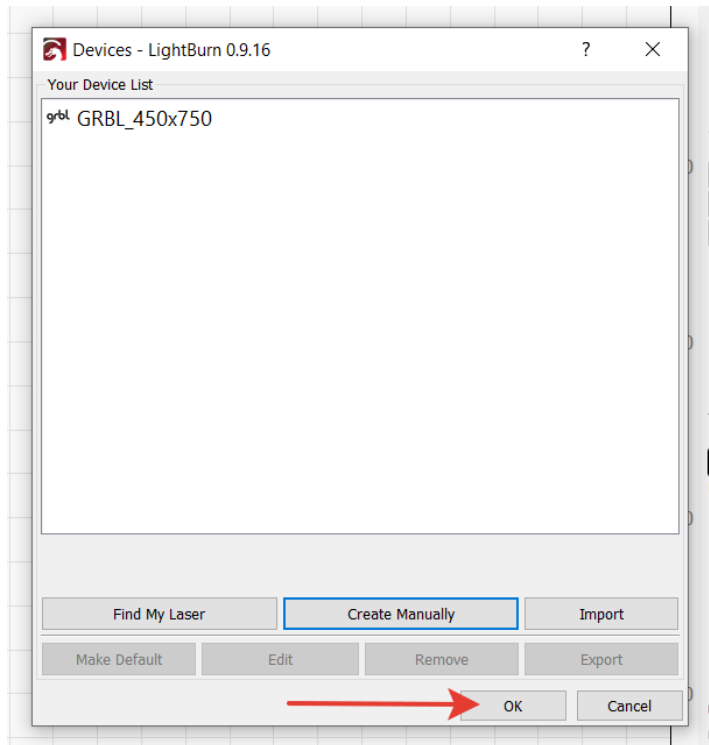


screenshots.

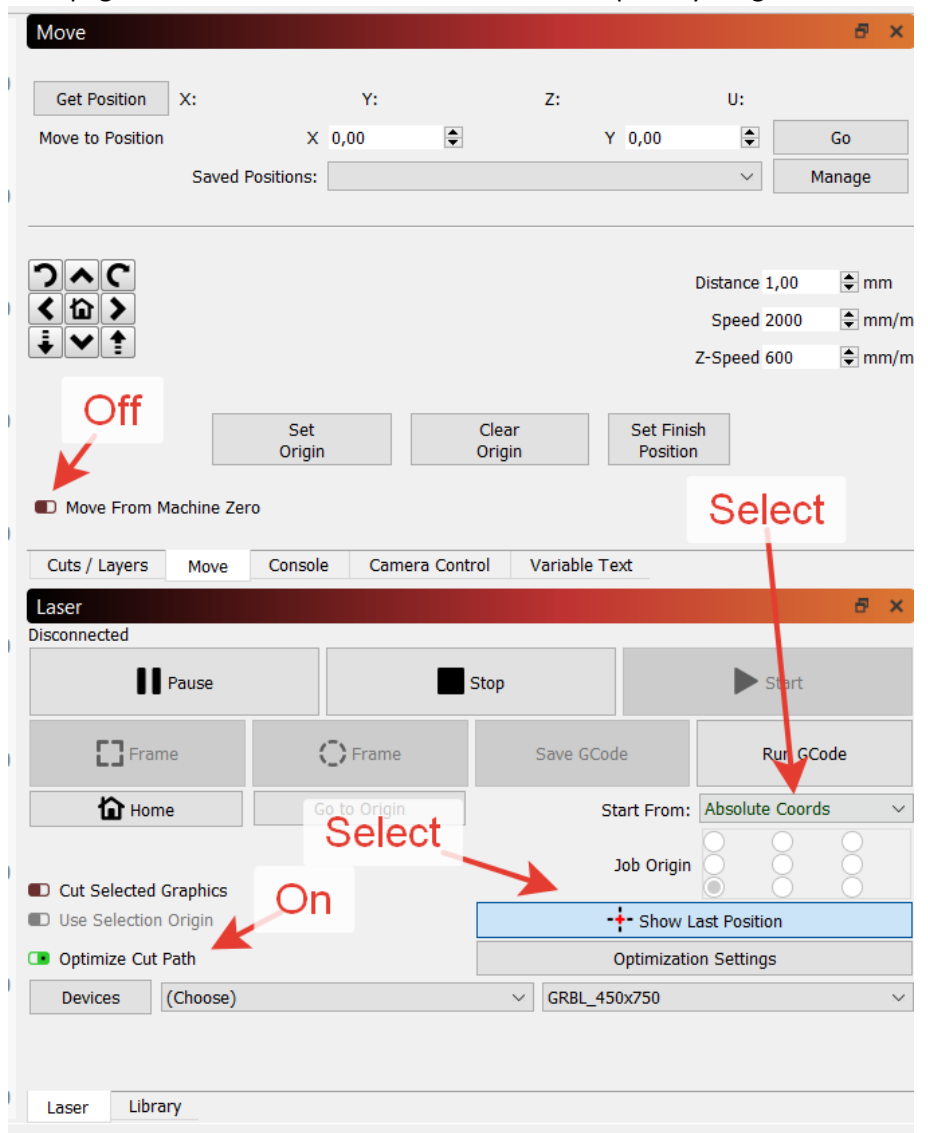






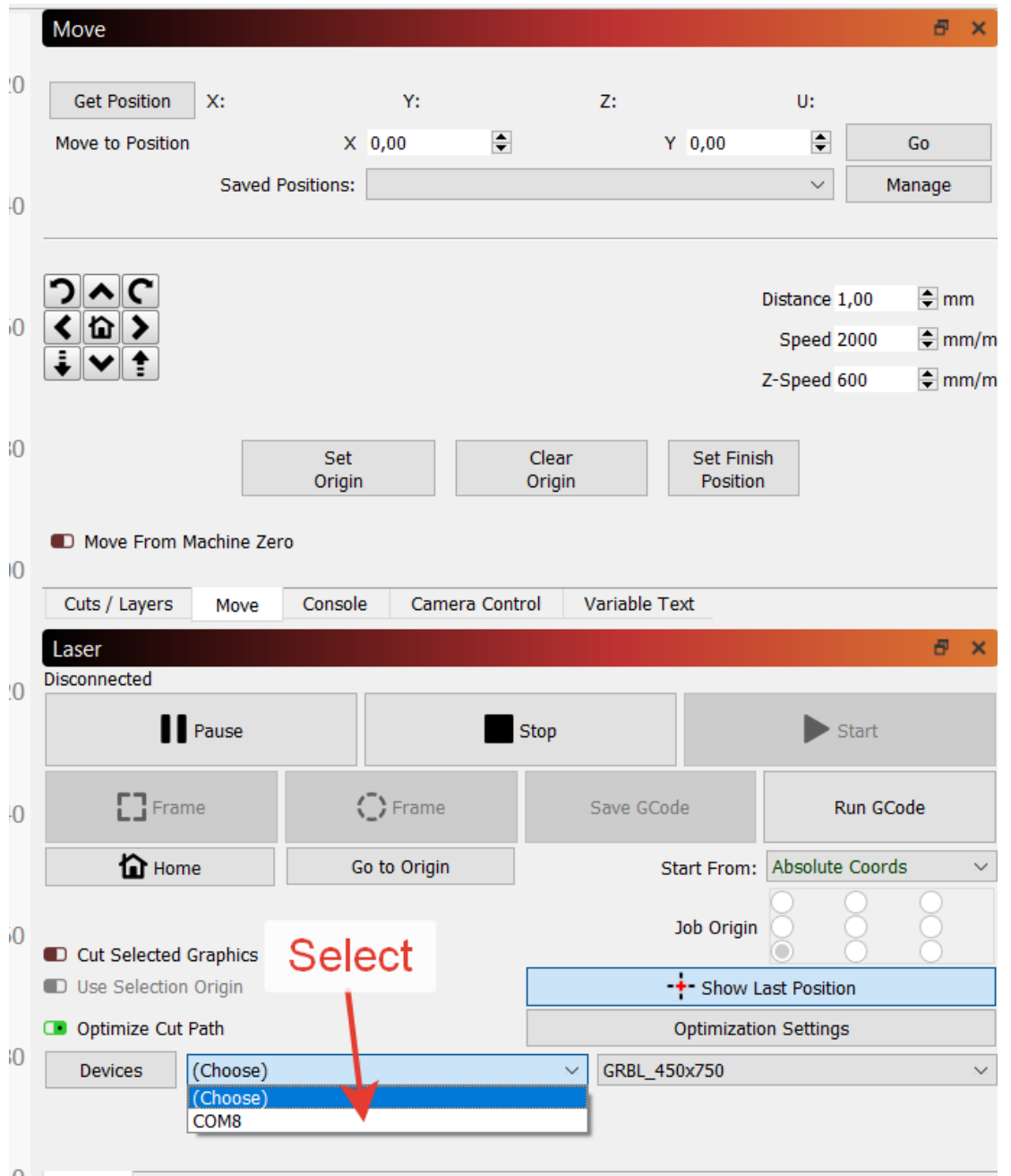


6. Now we go to the tab page in the left-hand bottom corner and set up everything as shown on



the screenshots.

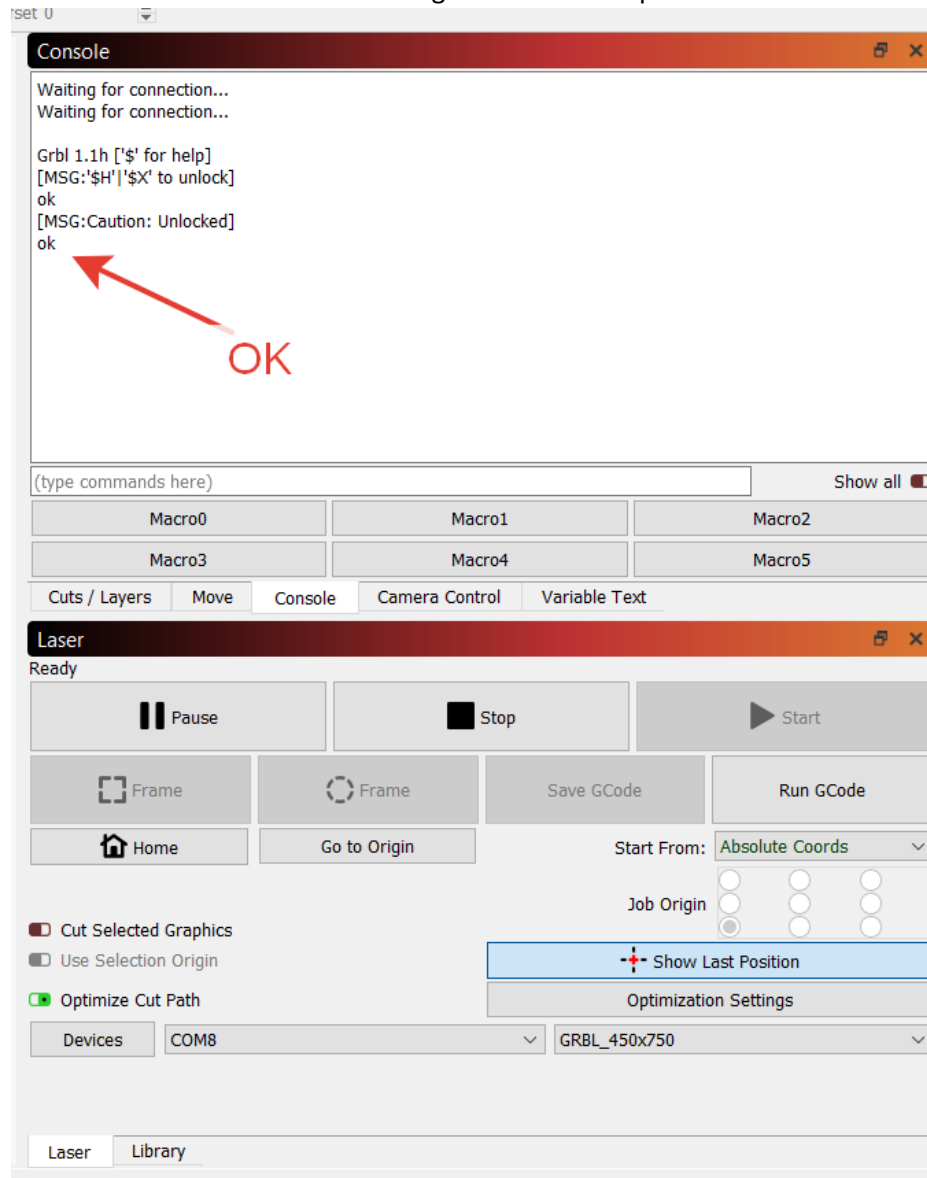
7. We pick up our device from the list. The port number COM may be different but must coincide with the port number from the instruction on the machine driver installation.



8. Now we click the tab «Console»

The image shows a screenshot of a CNC control software interface. The top window is titled "Move" and contains fields for X, Y, Z, and U coordinates, with X and Y set to 0,00. Below these are buttons for "Get Position", "Move to Position", "Go", and "Manage". A "Saved Positions" dropdown menu is also present. To the left of the coordinate fields are directional movement icons. To the right are speed settings: "Distance 1,00 mm", "Speed 2000 mm/m", and "Z-Speed 600 mm/m". Below these are buttons for "Set Origin", "Clear Origin", and "Set Finish Position". A checkbox labeled "Move From Machine Zero" is checked. At the bottom of the "Move" window, there is a tabbed interface with "Cuts / Layers", "Move", "Console", "Camera Control", and "Variable Text". A red arrow points to the "Console" tab. Below the "Move" window is the "Laser" window, which is currently inactive. It shows a "Ready" status and buttons for "Pause", "Stop", and "Start". Other buttons include "Frame", "Save GCode", "Run GCode", "Home", and "Go to Origin". There are also checkboxes for "Cut Selected Graphics", "Use Selection Origin", and "Optimize Cut Path". A "Start From:" dropdown is set to "Absolute Coords", and a "Job Origin" section has three radio buttons. A "Show Last Position" button is highlighted in blue. At the bottom, there are "Devices" dropdowns set to "COM8" and "GRBL_450x750".

9. The following text will show up.



10. The setting is complete.
11. We disconnect the CNC machine from the computer.
12. Turn off the machine using the switch from point 1 of this instruction.
13. Close the Lightburn program.