

Configuration, installation and operation of the machine was tested on Windows 10x64 Pro N built in 004.



Control Panel > System and Security > System

View basic information about your computer

Windows edition

Windows 10 Pro N
© 2020 Microsoft Corporation. All rights reserved.

System

Processor:	Intel(R) Core(TM) i7-3517U CPU @ 1.90GHz 2.40 GHz
Installed memory (RAM):	4.00 GB (3.89 GB usable)
System type:	64-bit Operating System, x64-based processor
Pen and Touch:	No Pen or Touch Input is available for this Display

Computer name, domain, and workgroup settings

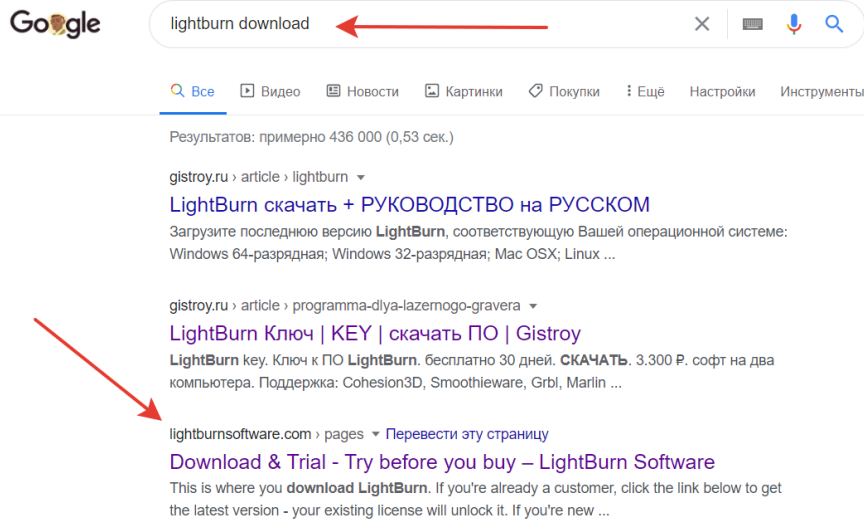
Computer name:	DESKTOP-1BG2IAC	Change settings
Full computer name:	DESKTOP-1BG2IAC	
Computer description:		
Workgroup:	WORKGROUP	

Windows activation

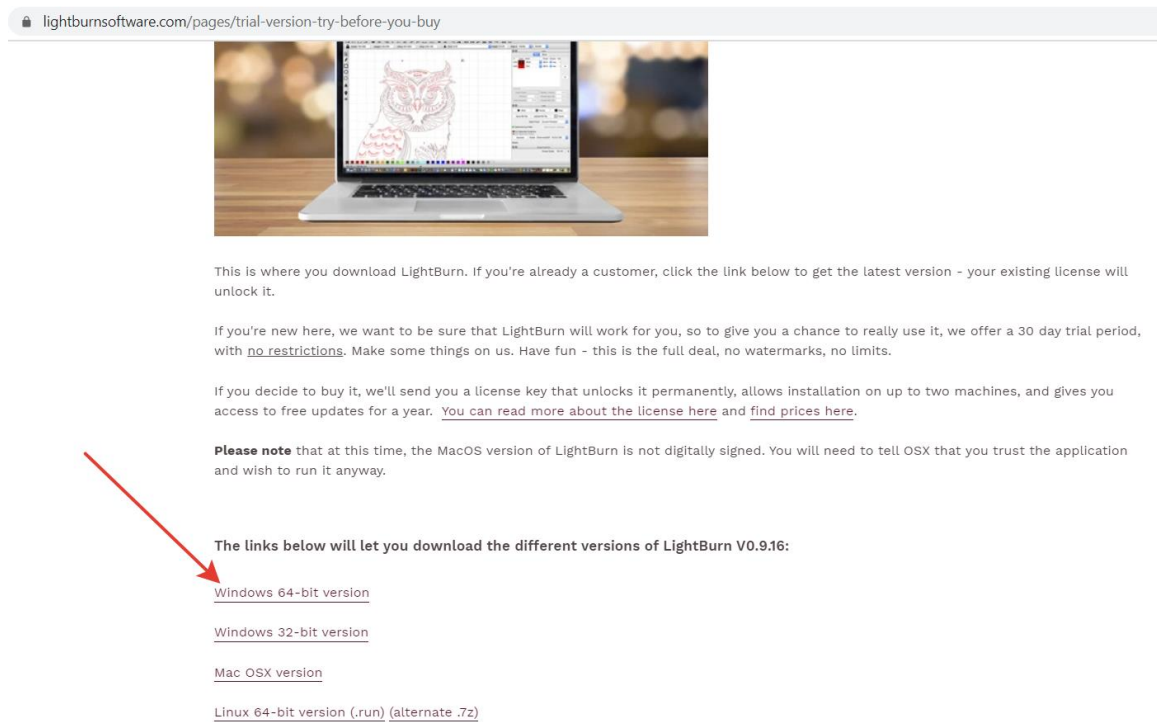
Windows is activated [Read the Microsoft Software License Terms](#)

Product ID: 00331-90000-00001-AA331 [Change product key](#)

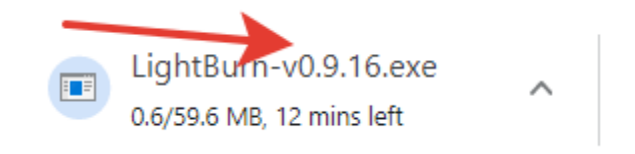
1. We launch a browser (for example Chrome), open any search engine (for example google.com), enter "lightburn download" in the query line and click on the link from the official website of the developer (shown by the arrow in the figure).



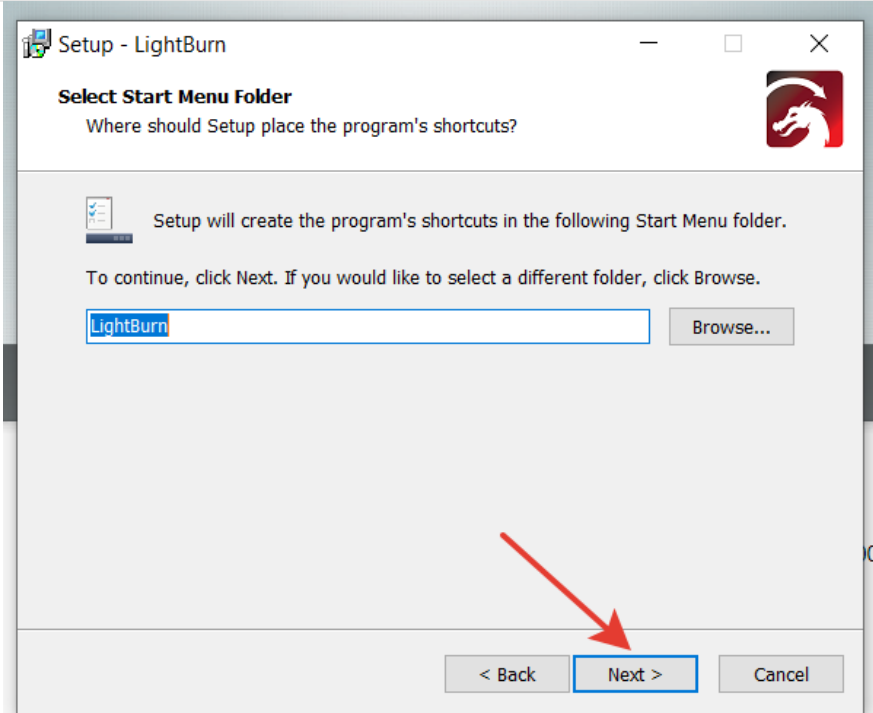
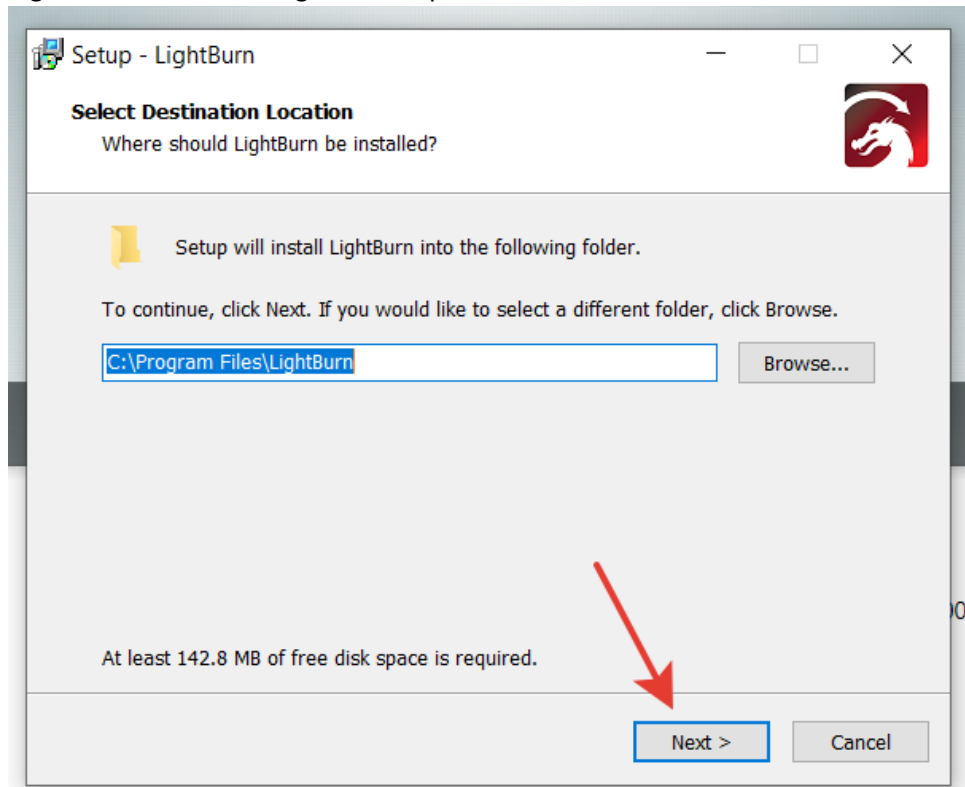
1. On the website of the developer we choose the version we need, in our case for OS Windows x64, and download it.

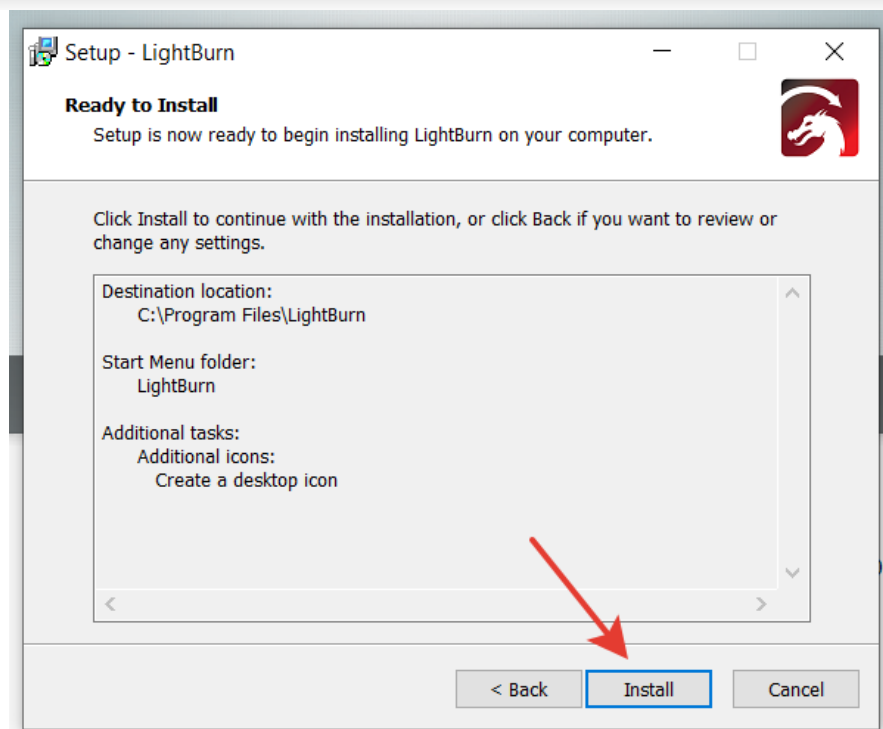
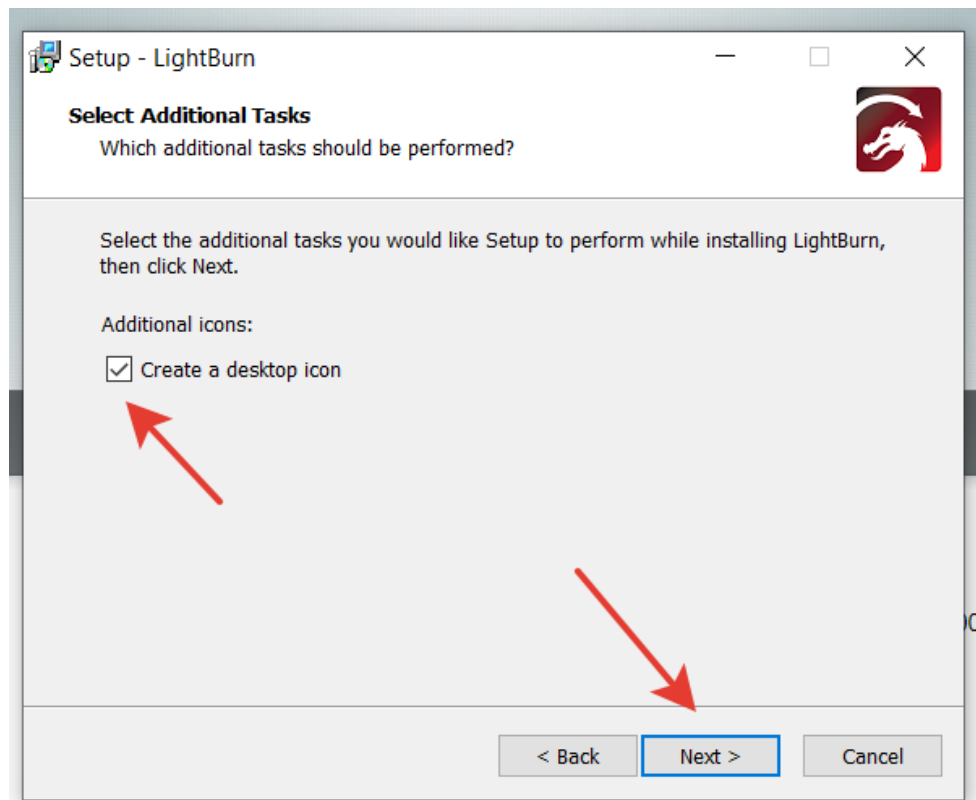


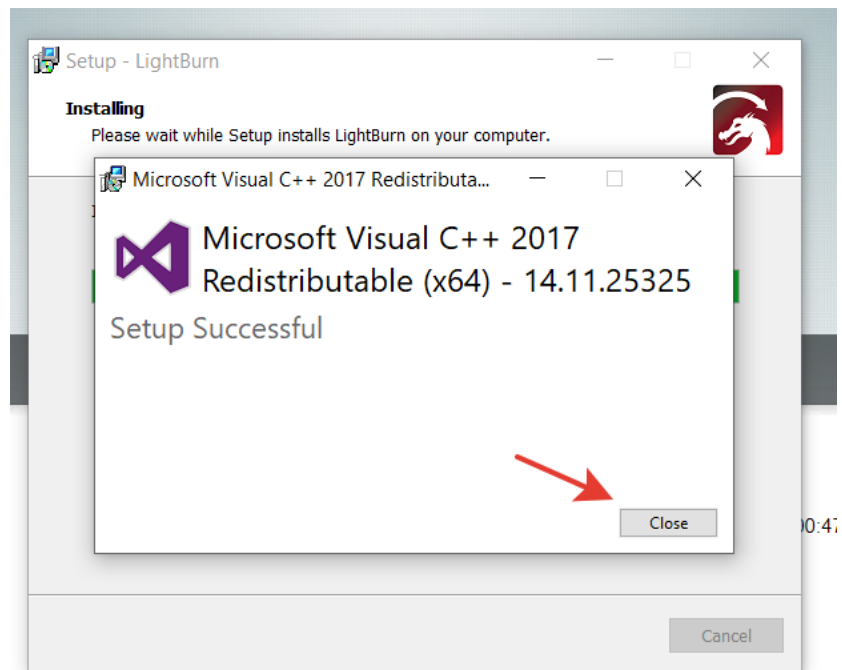
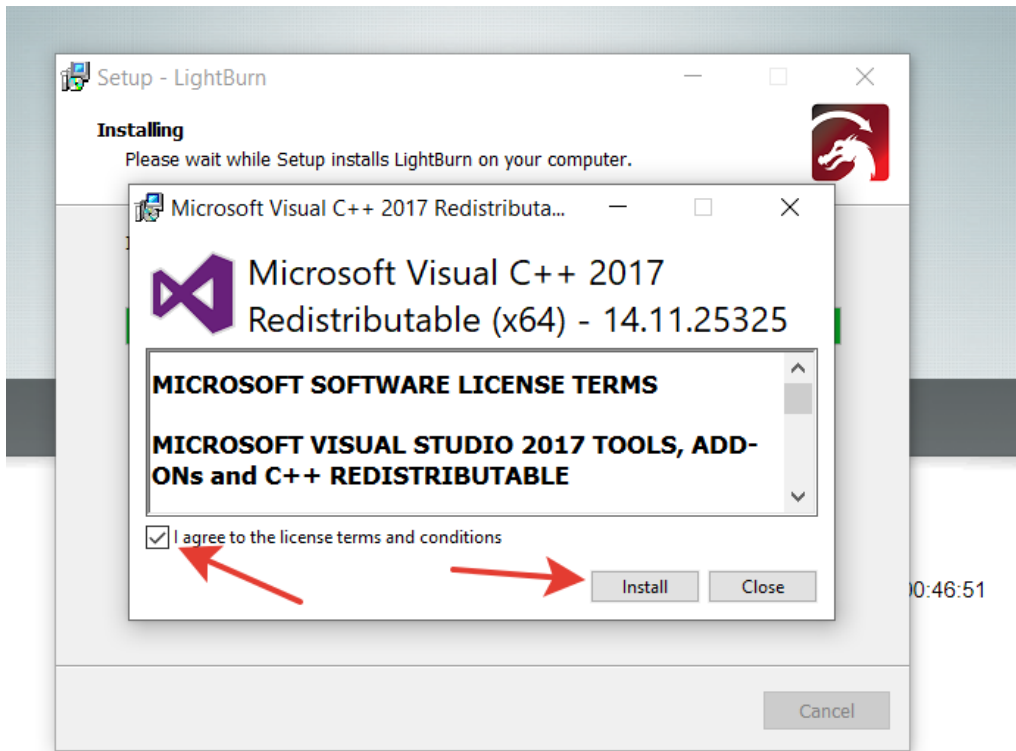
2. When the download is finished we launch the installation of the Lightburn program.

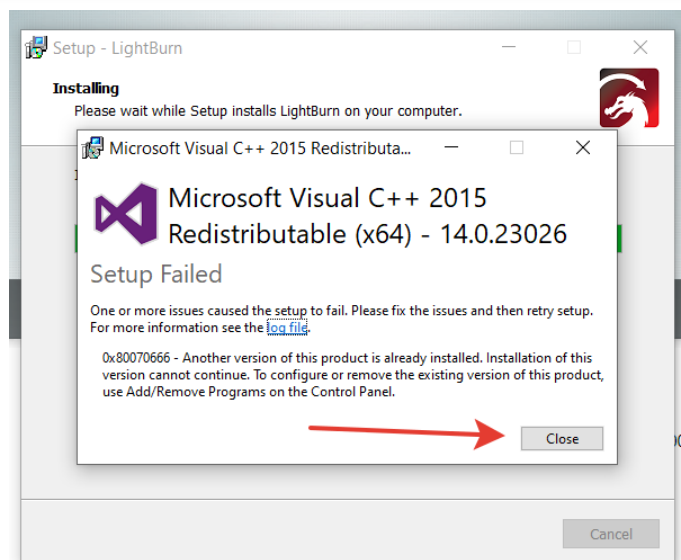
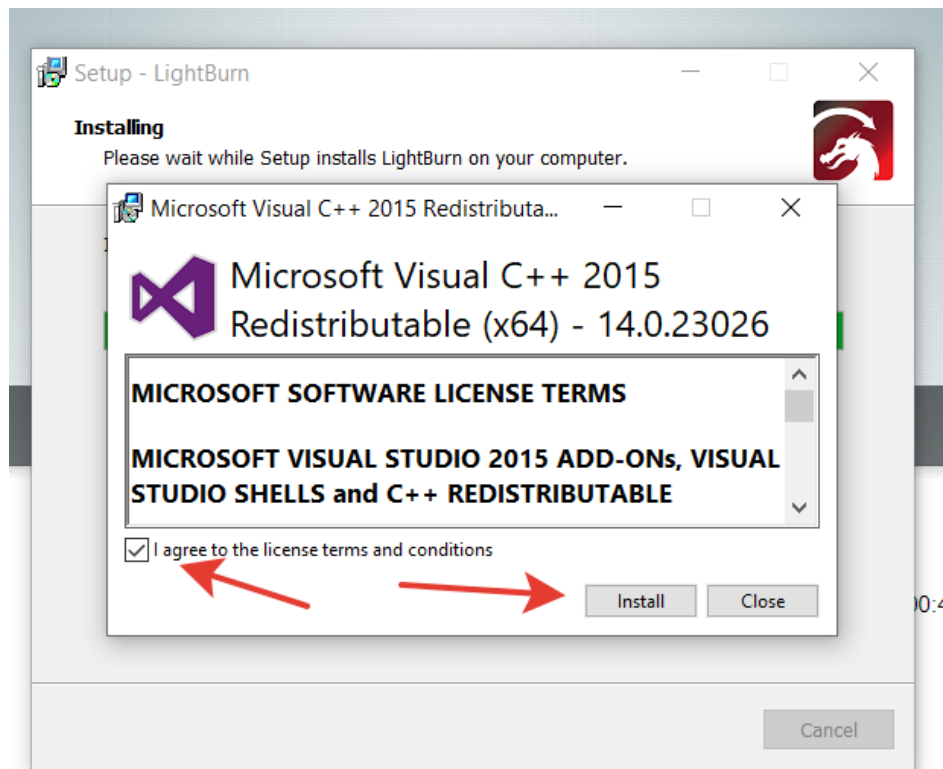


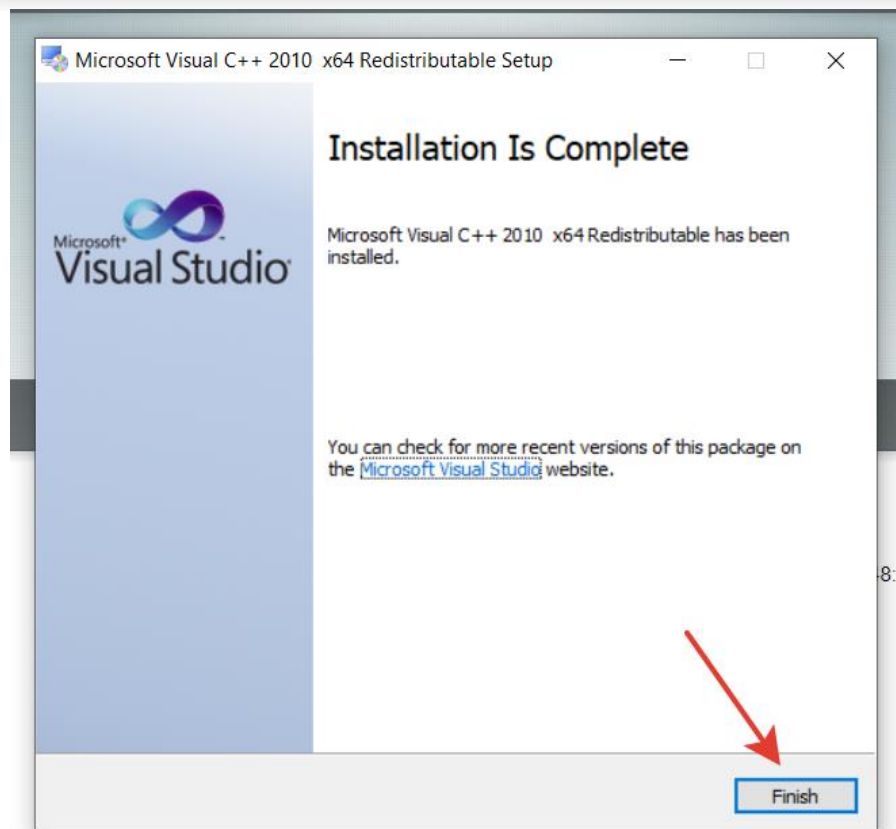
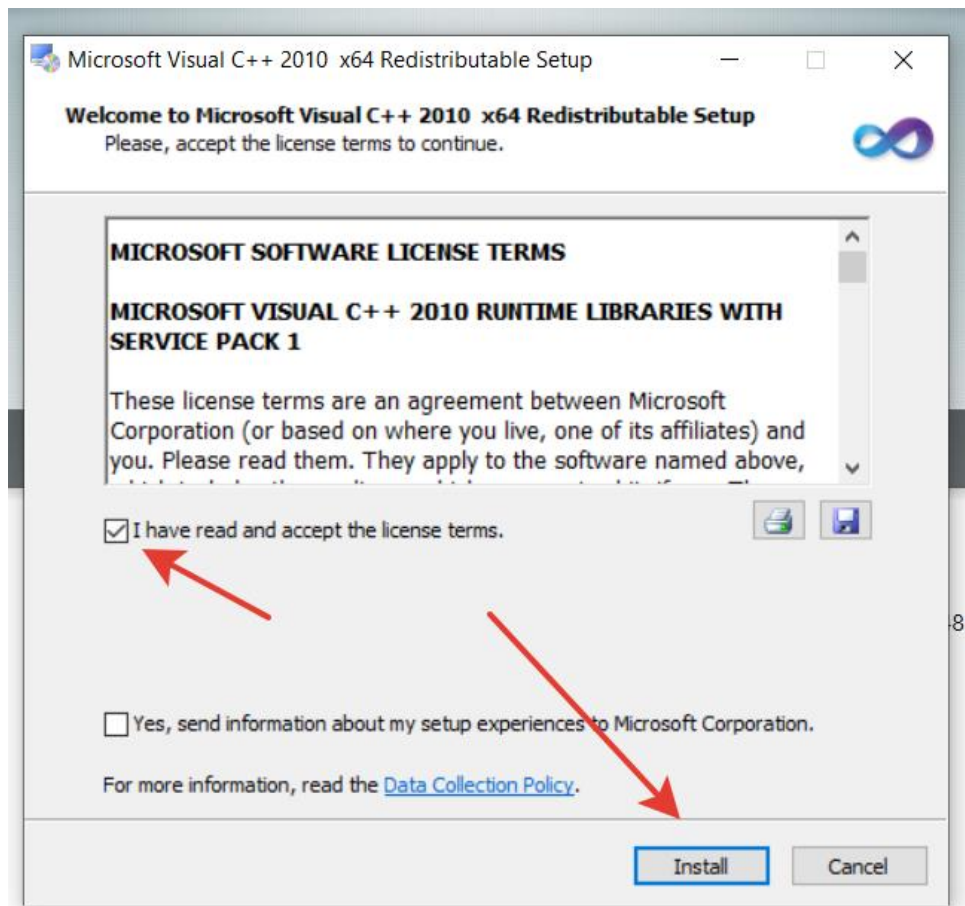
3. The program installation dialog box will open. We do and select what is marked with arrows.



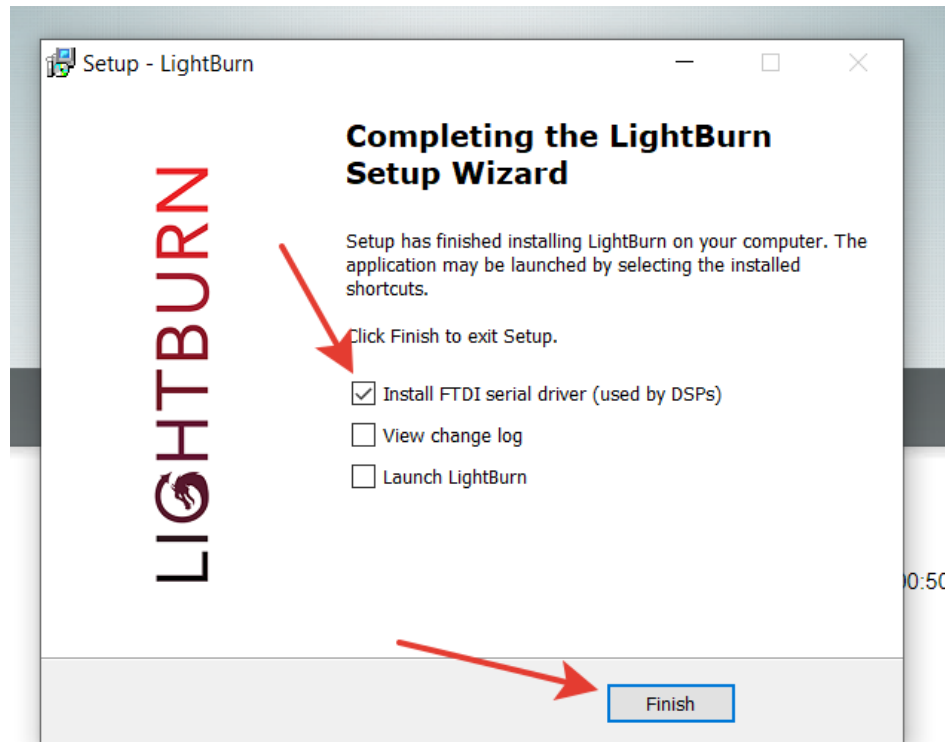




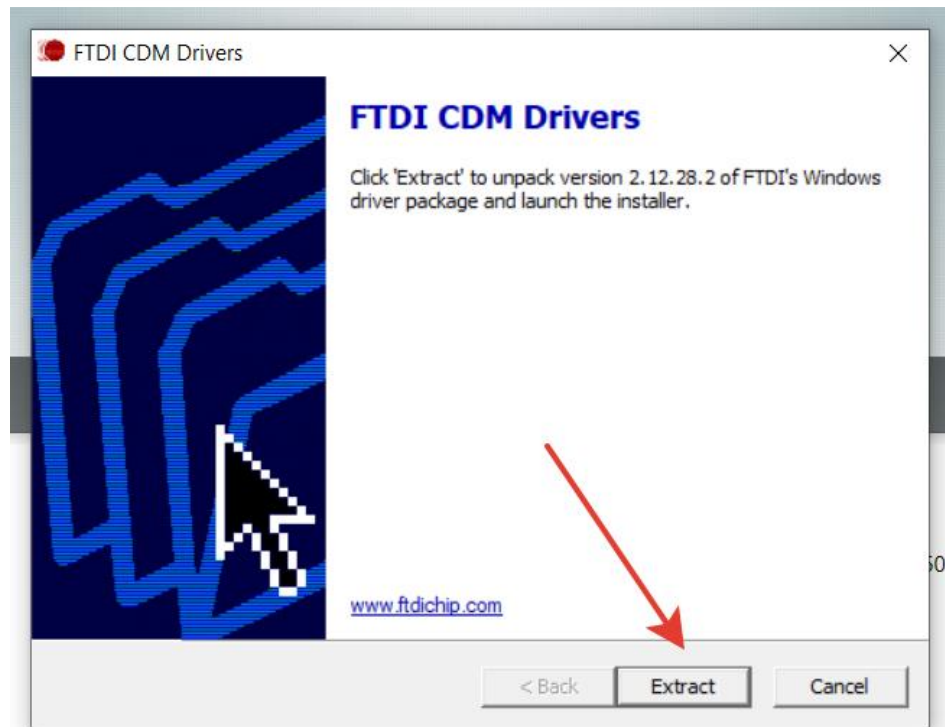


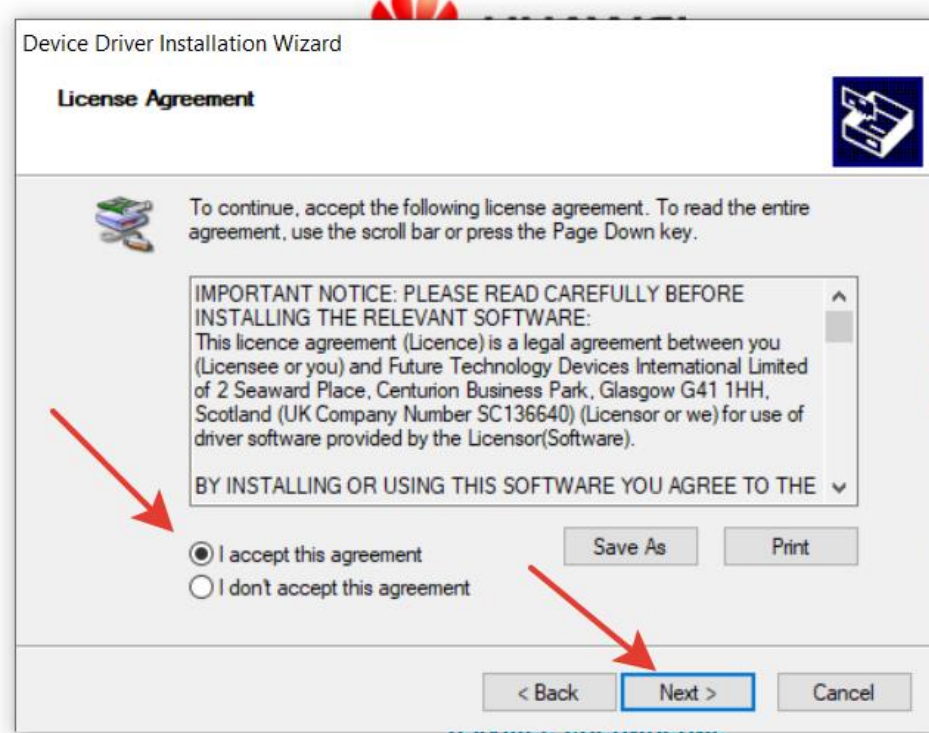
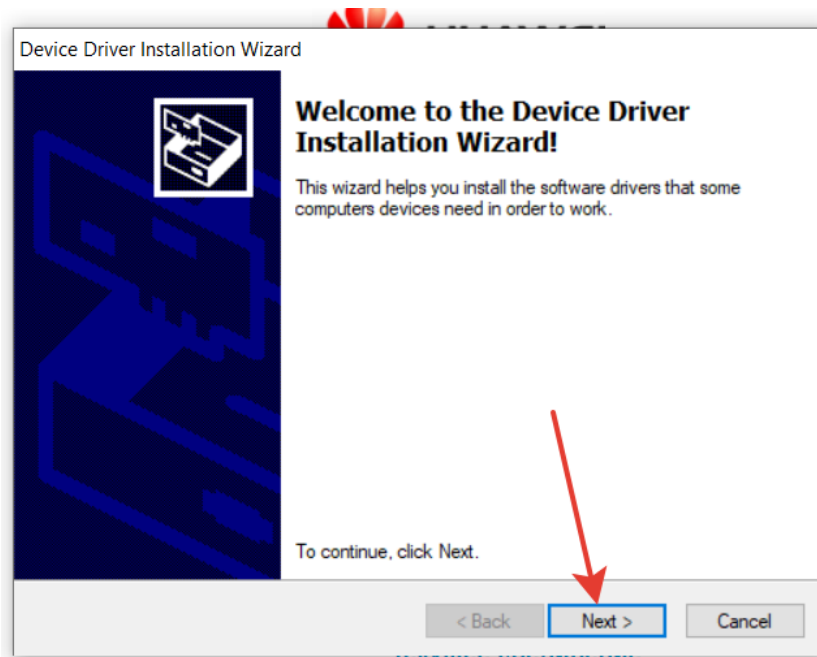


4. It is very important to select the driver installation for our machine. Do not forget to check if the desired line is marked, if it is not, we mark it.

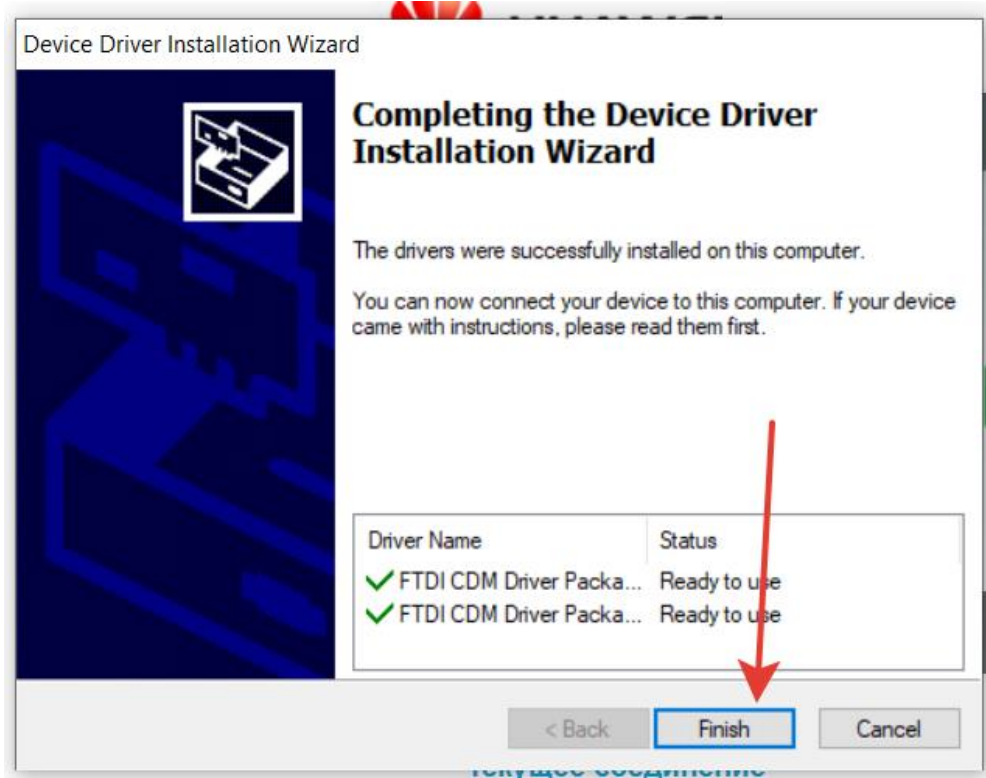


5.





6. After finishing all the tasks we click Finish.



7. The installation of the Lightburn program is complete.