

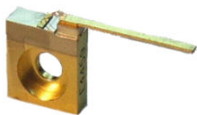
# LDX Optronics Inc.

## 730nm-885nm Laser Diodes – Free Space

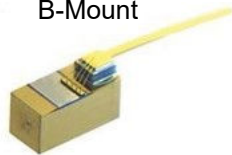
Part Number	Wavelength (nm)	Output Power (mW)	Emitter Size (um)	Operating Temp (°C)	Threshold Current (mA) Typ.	Operating Current (mA) Typ.	Operating Voltage (V) Typ.	Beam Divergence (FWHM)		Spectral Width (FWHM)	Polarization
								$\theta_{  }$ (°)	$\theta_{\perp}$ (°)		
LDX-3215-735	735 ±5 nm	2,000	150	20	600	2300	1.9	6	26	1	TM
LDX-3430-735	735 ±5 nm	4,000	300	20	1800	5200	1.9	6	26	1	TM
LDX-3110-750	750 ±5 nm	1,500	100	20	400	1600	1.9	6	26	1	TM
LDX-3315-750	750 ±5 nm	3,000	150	25	500	3300	1.9	6	26	1.5	TM
LDX-3530-750	750 ±5 nm	5,000	300	20	1800	5600	1.9	6	26	1.5	TM
LDX-3315-760	760 ±5 nm	3,000	150	20	800	3200	1.9	6	26	1	TM
LDX-3630-760	760 ±5 nm	6,000	300	20	2000	6200	1.9	6	26	1	TM
LDX-3105-780	780 ±5 nm	1,200	50	20	300	1250	1.9	7	26	1	TM
LDX-3210-780	780 ±5 nm	2,000	100	20	400	2025	1.9	7	26	1	TM
LDX-3315-780	780 ±5 nm	3,000	150	20	800	2800	1.9	7	26	1	TM
LDX-3315-795	795 ±5 nm	3,000	150	25	500	2900	1.9	7	26	1.5	TM
LDX-3105-808	808 ±3 nm	1,200	50	20	300	1350	1.9	7	36	1	TE
LDX-3210-808	808 ±3 nm	2,000	100	20	300	2000	1.9	7	36	1.5	TE
LDX-3310-808	808 ±3 nm	3,000	100	20	400	3000	1.9	7	36	1.5	TE
LDX-3415-808	806 ±3 nm	4,000	150	20	370	3700	2.0	7	36	2	TE
LDX-3620-808	808 ±3 nm	6,000	200	20	1200	8500	1.8	7	27	2	TE
LDX-3740-808	808 ±3 nm	7,000	400	20	950	7100	2.0	7	36	1.5	TE
LDX-3A20-808	808 ±5 nm	10,000	200	25	1400	10000	1.8	7	27	1.3	TM
LDX-3110-830	830 ±5 nm	1,600	100	20	250	1600	1.9	7	40	2	TE
LDX-3105-860	860 ±10 nm	1,000	50	20	150	1000	1.9	7	44	2	TE
LDX-3110-860	860 ±10 nm	1,600	100	20	200	1500	1.9	7	40	2	TE
LDX-3310-860	860 ±10 nm	3,000	100	25	400	2800	1.9	7	40	2	TE
LDX-3215-860	860 ±10 nm	2,500	150	20	350	2500	1.9	7	44	2	TE
LDX-3320-860	860 ±10 nm	3,300	200	20	450	3300	1.9	7	44	2	TE
LDX-3425-860	860 ±10 nm	4,200	250	20	550	4200	1.9	7	44	2	TE
LDX-3530-860	860 ±10 nm	5,000	300	20	650	5000	1.9	7	44	2	TE
LDX-3535-860	860 ±10 nm	5,800	350	20	750	5800	1.9	7	44	2	TE
LDX-3640-860	860 ±10 nm	6,600	400	20	850	6600	1.9	7	44	2	TE
LDX-3210-885	885 ±10 nm	2,500	100	20	200	2100	2.0	7	44	2	TE
LDX-3515-885	885 ±10 nm	5,000	150	20	350	4600	2	7	44	2	TE

### Standard Free Space Package Options:

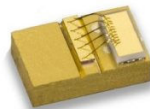
C-mount



B-Mount



Q-mount



Chip on Substrate (COS)



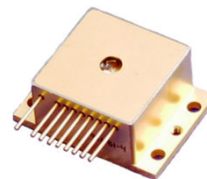
9.0mm



TO-3 Package



HHL Package



For Additional Information Contact:



203 Joseph St. O'Fallon, Mo 63366

Phone: (636) 272-7227; fax (636) 272-3909

[diodes@rpmclasers.com](mailto:diodes@rpmclasers.com) [www.rpmclasers.com](http://www.rpmclasers.com)



Revised:  
8/1/2018

5  
Copyright 2017.  
All rights reserved.